

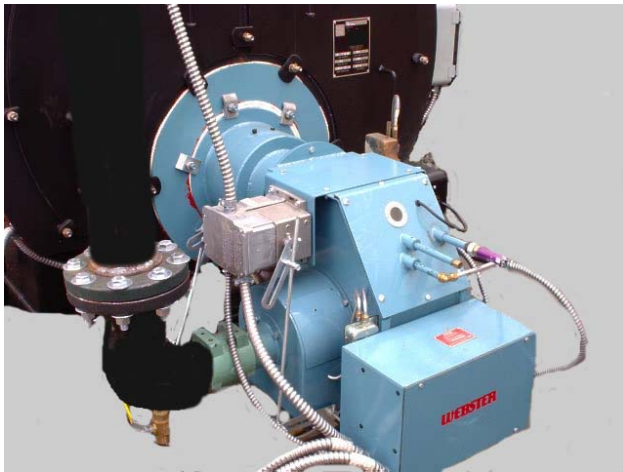
# WEBSTER™

Engineering & Manufacturing Co., L.L.C.

619 Industrial Rd.  
Winfield, Kansas 67156

## California Certified Low NOx Gas Burner

The JBFX2G-15 Webster Engineering low NOx burner sets a new standard for Scotch Marine applications 50 HP and smaller.

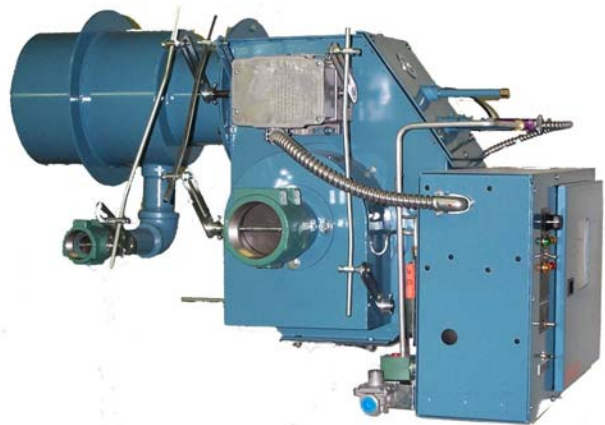


Available as either a modulation burner or low-high-off operation, the JBFX2G-15 burner is certified by the SCAQMD to requirements less than 30-ppm (3%) of NOx formation for applications 50 HP and below.

The California model has a 9" by 14" burner junction box and a 15" by 24" remote control panel. The remote control panel features the Webster standard four light indication package and on-off toggle switch.

For applications outside of California, the panel is available mounted on the back of the burner reducing installation time and cost. Remote panel is available as an option. Burner options include everything necessary for a smooth and successful field installation. Most standard upgrading options for flame safeguards and gas trains are available to meet your requirements. Webster manufactured front plates make installation quick and simple while providing exceptional refractory life.

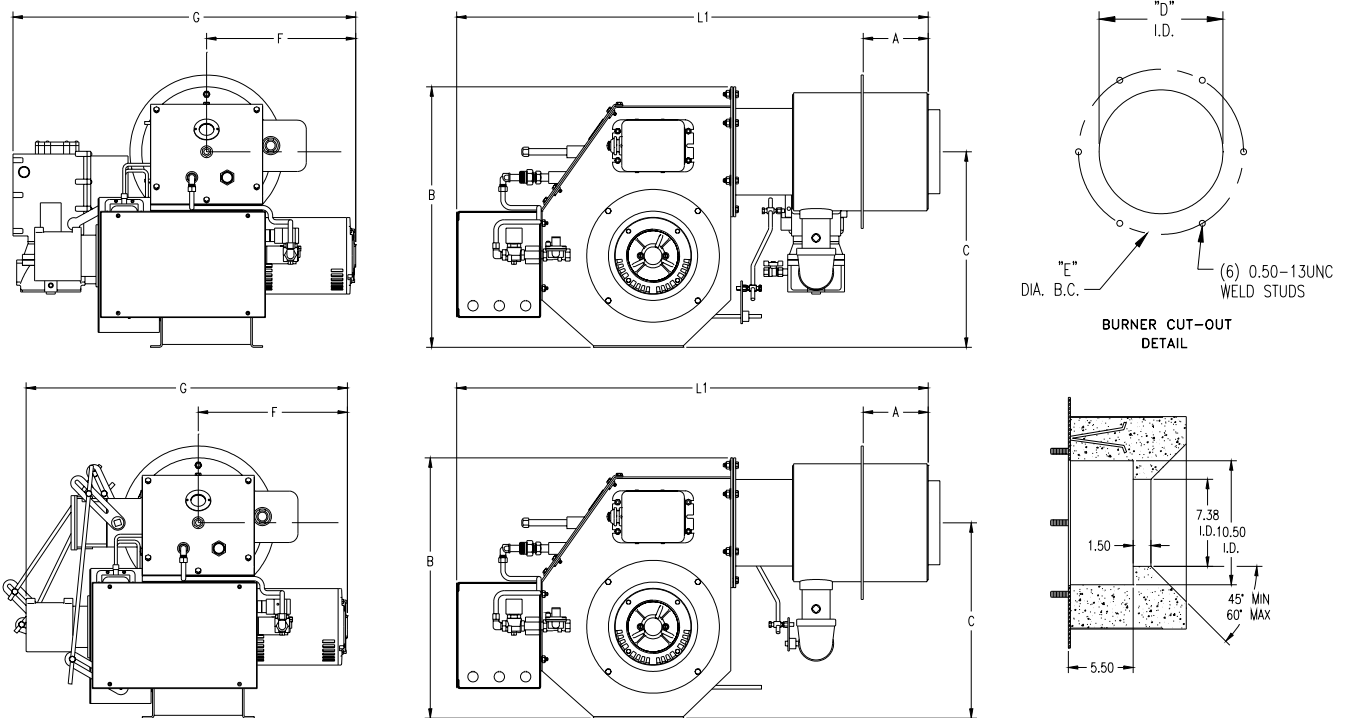
This burner is available for quick delivery. When you need a quick turnaround, simple operation and guaranteed results, call your Webster representative. You or your customers can comply with many local NOx emission codes in the United States. Many areas will accept the California certification as proof of compliance with local codes.



## Standard Equipment and Options

Equipment Selections	Low Fire Start		Modulation	
	Std	Opt	Std	Opt
1½ HP ODP motor	120/60	3 phase	120/60	3 phase
3" FGR Flow control valve mounted	X		X	
3" FGR shut-off valve shipped loose (1)	X		X	
Burner mounted rear control panel		X		X
3 phase step down transformer		X		X
RM 7895C or MEP562 Flame Safeguard	X		X	
Refractory front plate		X		X
1½" NPT gas train for 14" to 27" w.c. supply (1½" RP FCV)	X		X	
Pre-piped, pre-wired gas train		X		X
Alternate gas train sizes		X		X
Remote panel (for California model)	X		X	
External flame scanner (Infrared Scanner)	X		X	

NOTE: 3" based upon 2-pass boiler, 4" required for 3-pass boiler. See FGR sizing manual for more details on correct sizing and installation of FGR piping.



	A	B <sub>1</sub>	B <sub>2</sub>	C	D	E	F	G	L <sub>1</sub>	L <sub>2</sub>
Low Fire Start	5.5"	22"	27"	16.5"	10.5	14"	12.5"	27.5"	40"	39"
Modulation	5.5"	22"	27"	16.5"	10.5	14"	12.5"	29"	40"	39"

NOTES: 1) Dimensions with subscript 1 are for the burner with a junction box. Dimensions with a subscript 2 are for burners with a 15" by 24" control panel mounted on the burner.

2) Typical burner mounted panel is a back mounted panel. Optional panel location is on the top of the burner.