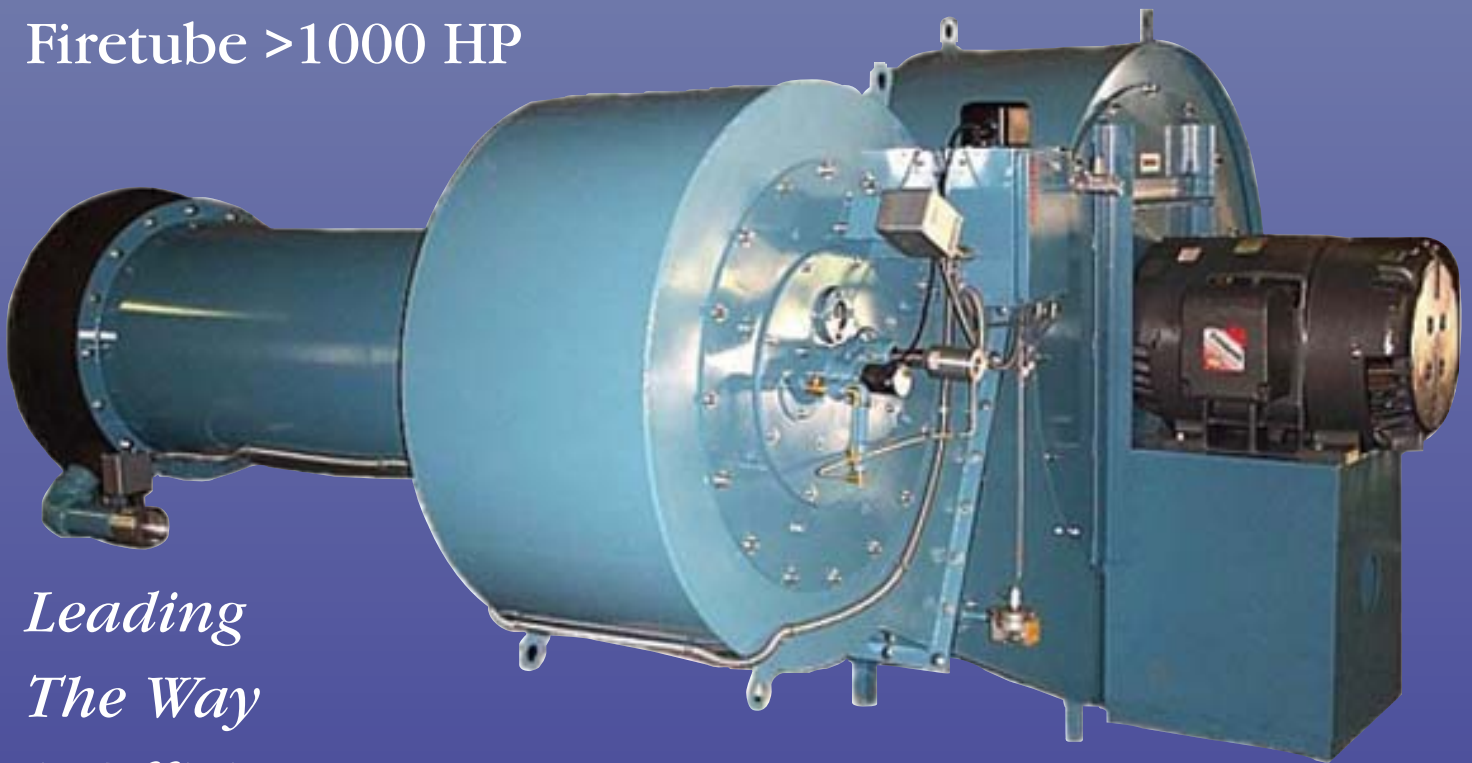


WEBSTER™

HDR-RF SERIES BURNERS

Watertube >900 HP,
High Turn Down and
Special Furnace Sizes

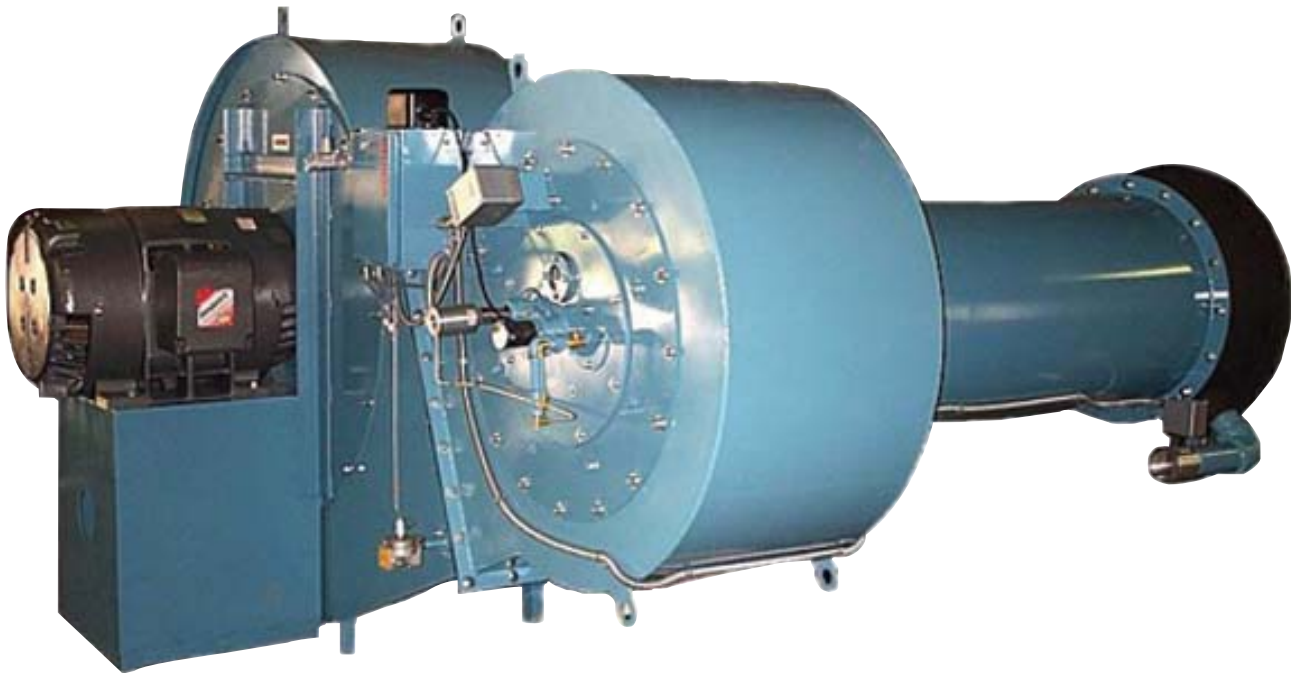
Firetube >1000 HP



*Leading
The Way
in Efficiency,
Reliability
& Safety*

The Leader in Combustion Innovation

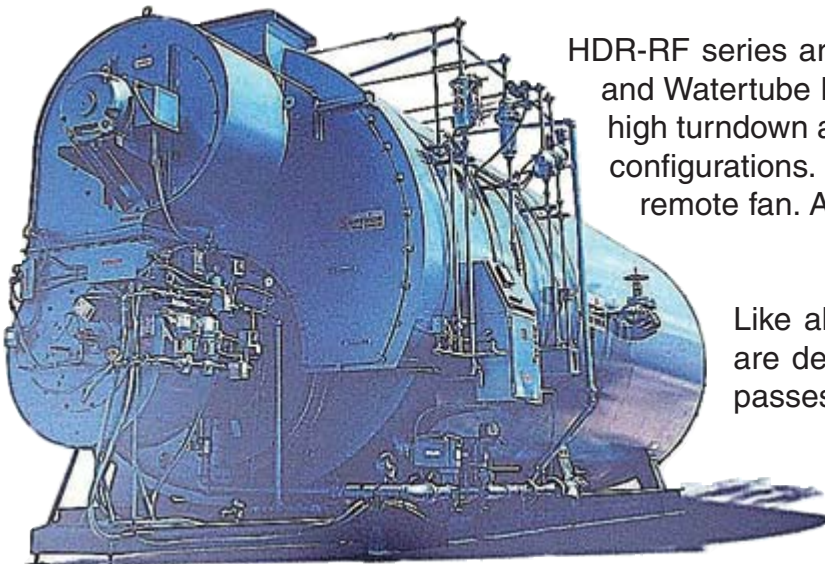
HDR-RF Series



Register Burner with Remote Fan

“Webster continues its leadership in combustion innovation” with upper-range combustion equipment. The series HDR-RF takes the lead in meeting the demands of today’s customers. Webster continues to expand the size offering in the firetube line. The HDR-RF burner has led the way to larger firetube boiler sizes.

The versatility and flexibility of Webster’s Series HDR-RF burners save time and money. Our HDR-RF readily adapts to most available boiler and furnace configurations. HDR-RF can be installed vertically, horizontally, left or right to accommodate even the most unique on-site condition. The HDR-RF series combustion head is capable of burning a wide range of fuels from Natural, LP and low BTU gas to all commercially available grades of fuel oil and qualified waste oil... either separately or in combination.



HDR-RF series are full register burners for both Firetube and Watertube boiler applications. This Series provides high turndown and flame shaping to fit different furnace configurations. Offers flexible mounting styles including remote fan. Also available in FGR.

Like all Webster burners, our HDR-RF series are delivered only after each burner package passes a full test in our lab.

Why **WEBSTER**TM ?

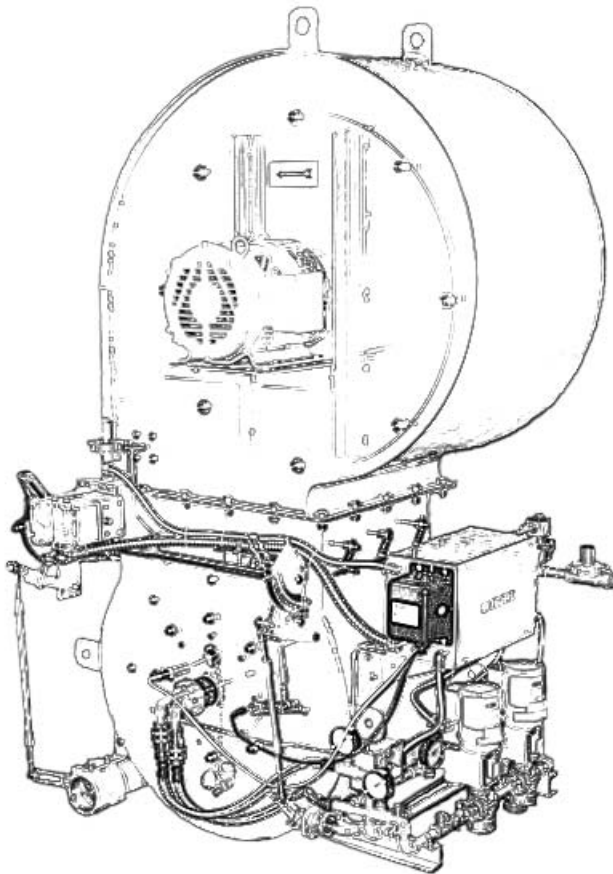
HDR-RF Series

Save Maintenance Costs (\$) Through Eliminating Soot Buildup

- High Combustion Efficiency
- Tight Shut off, Fully Modulating Register For Flame Shaping to Fit Your Furnace
- Access Doors for Easy Service of the Fan & Firing Head.

Save Fuel Costs (\$) Through Efficient Flame Management

- 13pt Adjustable Fuel Cam
- Excellent Fuel / Air Ratio
- Outstanding Flame Stability
- Register Technology



PosiControl System

- Optional Linkageless Control System
- Tamper Proof Operation

No Nuisance Tripping

- Purelit Pilot Ignition System - Most Reliable Pilot Available
- Factory Tested Prior to Shipment

Save Operating Costs (\$)

- Low Motor HP / BTU
- Lower Electric Bills
- **1750 RPM for Low Sound Levels

High Turn Down

- 10 to 1* Turndown
- Reduces on/off Cycling
- Keeps Boiler on Line for Fast Response
- Reduced Purge Losses (\$)

* For Natural Gas Firing

** 3450 RPM 250 to 600hp

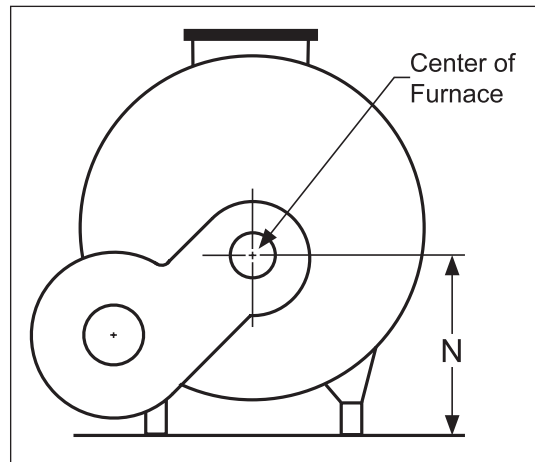
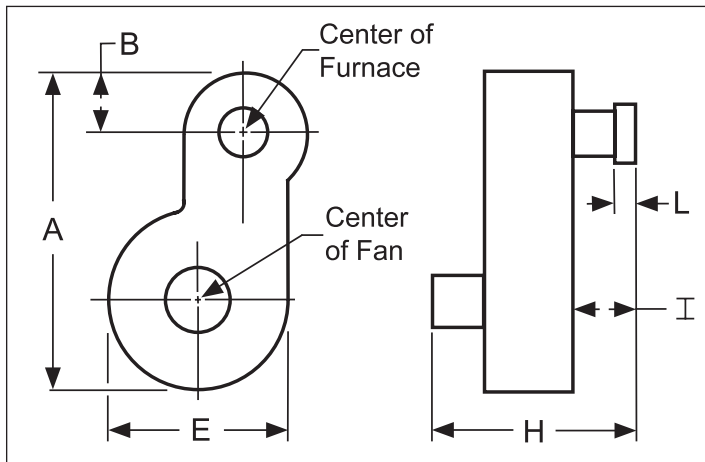
DIMENSIONS and RATINGS for HDR-RF

For Firetube and Watertube Applications

Dimensions and rating shown are typical - see website or contact your Webster Representative for Complete offering details.

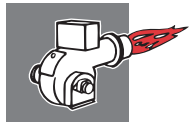
MBH	10463	10463	12555	16740	20925	20925	25110	31387.5	33480	41850
Boiler HP	250	250	300	400	500	500	600	750	800	1000
HEAD	11	11	13	13	15	15	17	17	19	19
RPM	3450	3450	3450	1745	3450	17.45	3450	1745	1745	1745
FAN	15	16.5	13.5	33	16.5	33	18.2	36.5	27	40.2
A	55.1	57.9	52.1	81.2	65.1	92.9	73.1	97.2	82.2	102.4
B	15.2	15.2	15.2	15.2	18.2	18.2	18.2	18.2	18.2	18.2
E	22.9	25.1	20.6	49.8	25.1	52.1	27.6	54.9	40.8	60.5
H	59.6	59.6	59.6	63.1	65.7	66.5	65.8	67.9	64.8	73.2
I	22	22	22	22	22	22	22	22	22	22
L	6	6	6	6	6	6	6.1	6.1	8.6	8.6
N	38.1	38.4	37.8	41.5	46.1	50.9	44.4	53	47.5	55.8

MBH	46035	50220	62775	62775	75330	83700	92070	104625	150000	200000
Boiler HP	1100	1200	1500	1500	1800	2000	2200	2500	NA	NA
HEAD	21	21	23	23	25	25	27	27	33	35
RPM	1745	1745	1745	1745	1745	1745	1745	1745	1745	1745
FAN	30	40.2	33	44.5	36.5	44.5	36.5	49	44.5	49
A	87.3	102.5	98.3	115.4	104.2	130.2	117.9	136.7	137.9	144.4
B	18.2	18.2	24.1	24.1	24.2	24.2	24.2	24.2	31.9	31.9
E	45.3	60.5	49.8	67	54.9	67	54.9	73.7	67	73.7
H	68.3	75.9	73.8	79.4	75.4	80.3	85.1	89.5	89.5	89.5
I	22	22	22	22	22	22	22	22	22	22
L	8.6	8.6	8.6	8.6	8.6	8.6	8.8	8.8	8.8	8.8
N	50.4	53.7	54.3	56.9	59.3	61	59.3	62	50.3	51.3



Application Notes

- The burner can be rotated from the position shown, to fit the space available.
- The dimensions given are approximate, and can vary with options and mounting variations.
- Control panels, junction boxes, Fuel-Air-Ratio controls not included in dimensions
- Fuel trains not shown
- Air compressor and pump for oil firing are mounted separately.



WEBSTER™

ENGINEERING & MANUFACTURING CO., INC.

619 Industrial Road • Winfield, Kansas 67156

Phone 1-620-221-7464 • FAX 1-620-221-9447

email: sales@webster-engineering.com

See Our Web Page: www.webster-engineering.com

Represented by: